

The WAHL logo is presented in a silver, rounded rectangular frame with a metallic sheen and a slight 3D effect. The word "WAHL" is in a bold, black, sans-serif font, with a registered trademark symbol (®) positioned to the upper right of the letter "L".

**WAHL®**

**RECHARGEABLE TRIMMER  
INSTRUCTIONS**

# Rechargeable Trimmer

Please read all instructions carefully to familiarise yourself with your new Wahl trimmer before using.

Save these instructions for further reference.

For any further assistance or information call Customer Services on

**T:** 01227 740066

or visit

**W:** [www.wahl.co.uk](http://www.wahl.co.uk)

**E:** [customer.services@wahl.co.uk](mailto:customer.services@wahl.co.uk)

## CONTENTS

<b>IMPORTANT SAFEGUARDS</b>	Page 4
<b>OPERATING INSTRUCTIONS</b>	Page 6
<b>CARE AND CLEANING</b>	Page 8
<b>TROUBLESHOOTING</b>	Page 9
<b>BATTERY REPLACEMENT, REMOVAL AND DISPOSAL</b>	Page 9
<b>TIPS FOR SUCCESSFUL STYLING</b>	Page 10
<b>WIRING</b>	Page 17
<b>GUARANTEE</b>	Page 18

## GENERAL USER INFORMATION

Information about using the operation manual

- ▶ Before using the appliance for the first time, you must read and understand the operation manual completely.
- ▶ Consider the operation manual as part of the product and store it in a safe and accessible place.
- ▶ Include this operation manual if passing the appliance on to a third party.
- ▶ In the case of conflicts with national safety specifications or instructions, the national requirements must be followed.

## Explanation of symbols and notes



### **DANGER**

Danger of electric shock which may result in serious physical injury or death.



### **DANGER**

Danger of explosion which may result in serious physical injury or death.



### **WARNING**

Warning of possible physical injury or a health risk.



### **CAUTION**

Information about danger of material damage.



Note with useful information and tips.

- ▶ Action to be taken by owner.
1. Carry out these actions in the sequence described.
- List

## Rechargeable Trimmer

Please retain this leaflet for future reference.

**READ ALL INSTRUCTIONS BEFORE USING.**

### **IMPORTANT SAFEGUARDS**

When using your electrical appliance, basic safety precautions should always be followed, including the following:

1. This appliance can be used by children from aged 14 years and above and persons with reduced physical, sensory or mental capabilities, or lack of experience and knowledge, if they have been given supervision or instruction concerning use of the appliance in a safe way and understand the hazards involved. Children shall not play with the appliance. Cleaning and user maintenance shall not be made by children without supervision.
2. Switch off the appliance and unplug from outlet when not in use, before putting on or taking off attachments and also before cleaning the appliance.
3. Never use your appliance without paying attention! Except when charging always unplug this appliance from the electricity outlet immediately after using.

## Rechargeable Trimmer

4. Do not operate the appliance with a broken cord, plug or charger, or if the appliance malfunctions, or is dropped or damaged in anyway.
5. Do not wrap the cord around the appliance.
6. Any servicing or repair must be performed by an authorised service representative.
7. Do not use outdoors or in damp areas.
8. The use of attachments that are not supplied by the manufacturer may cause fire, electric shock or injury and damage to the appliance.
9. To protect against risk of electrical shock, never immerse the unit or let it come into contact with water or any other liquids. Do not use the unit with wet hands. If the appliance should become wet, damp or fall in water, remove plug from mains socket immediately. Do not put your hands in the water. Do not take into bathroom.
10. Never carry the unit by its power cord.
11. Do not drop or insert any object into any opening.
12. Use this appliance only for its intended purpose.
13. Exhausted batteries/ rechargeable batteries should not be disposed of in the household waste. Dispose of them in a completely discharged state in accordance with local legal regulations. Do not throw into fire where heat could cause them to rupture.

## Rechargeable Trimmer



### **Danger of explosion**

- ▶ Never use the appliance where aerosol (spray) products are being used or where oxygen is released.



**WARNING: KEEP THE APPLIANCE DRY**

## **OPERATING INSTRUCTIONS**

### **Recharging your Lithium Ion Trimmer (Models 9818, WM80801)**

1. This trimmer is conveniently designed for household use. It should be allowed to charge 1 hour before first use.
2. Remove the trimmer, transformer and accessories from packing material.
3. Connect the transformer to the trimmer. BE SURE THE TRIMMER IS IN THE OFF – 0 POSITION WHEN CHARGING.
4. Plug the transformer into any convenient electrical outlet at the correct voltage.
5. When the trimmer is low in power, it should be connected to the transformer and plugged into an outlet to assure maximum power is available when it is next used. This transformer is designed to completely charge the battery without over charging.
6. The battery will take approximately 60 minutes to charge. The lithium ion trimmer also has a quick charge capability, 1 minute quick charge for over 3 minutes use.
7. Lithium Ion battery life may be extended with the following procedure:
  - Only charge the device when charging is required. A charge is required when the product begins to slow down or has trouble maintaining speed while performing its intended function.
  - If the device is fully discharged, apply a charge right away to prevent damage or inability to recharge.
  - A partial charge is fine; Li-Ion does not require a full charge.
  - Charge the device at moderate temperatures. Do not charge below freezing.
  - Do not leave the device connected to the charger when it is not plugged into an outlet.

## Rechargeable Trimmer

**i NOTE:** It is okay to leave the device in its stand for storage if the stand allows for the charger to be disconnected from the stand or product.

- Perform regular maintenance on the device including keeping the blades oiled, clean, and free of debris to prevent taxing the battery.
- When not in use, store the partially charged device in a cool and dry place away from heat sources and direct sunlight ( 25°C Ambient or less recommended)

**! WARNING:** ONLY USE THE TRANSFORMER SUPPLIED WITH THE TRIMMER. (For Lithium models please use Model 1031, P.N. 97818-4000. For non Lithium models, please use SPE024012B charger).

### Recharging Your NiMH Trimmer (Models 9854 and 9860)

1. This Trimmer is conveniently designed for household use. It should be allowed to charge overnight before first use.
2. Remove the trimmer, recharging transformer and accessories from the packaging.
3. Connect the transformer to the trimmer. BE SURE THE TRIMMER IS IN THE OFF – 0 POSITION WHEN CHARGING.
4. Plug the recharging transformer into any convenient electrical outlet at the correct voltage.
5. When the trimmer is low in power, it should be connected to the transformer and plugged into an outlet to assure maximum power is available when it is next used. This transformer is designed to continuously charge the battery without over charging.
6. Ni-MH battery life may be extended with the following procedure: Once every month, let the trimmer run until the motor stops. Move the switch to the OFF – 0 position and recharge fully overnight.

## Rechargeable Trimmer

### CARE AND CLEANING

#### OILING BLADES

For best results, put one or two drops of Wahl Clipper Oil on the blades before and after every use. Motor bearings are permanently lubricated—do not attempt to oil. When oiling your trimmer, turn the trimmer “ON - I,” hold the unit with the blades facing DOWN and squeeze one or two drops of oil onto the blades. Wipe off excess oil with soft cloth.



**NOTE: DO NOT OVER OIL!** Excessive oiling or application of liquids will cause damage if allowed to seep back into motor.

#### BLADE CARE

Trimmer blades have precision-hardened, ground and lapped cutting teeth. Blades should be handled carefully and never bumped or used to cut dirty or abrasive material.

#### CLEANING/STORAGE

Before storing your trimmer, use the cleaning brush to whisk any loose hairs from the unit and the blades. Always store the unit in such a manner so that blades are protected from damage. When the trimmer is not in use, the trimmer guide/blade guard attachment should be in place to protect the blades. (if included in your kit). Water getting into the charging socket may cause corrosion. When your trimmer is not in use, please store in the storage pouch or return to the stand provided. Avoid standing/laying/storing your trimmer in a damp area without the stand.

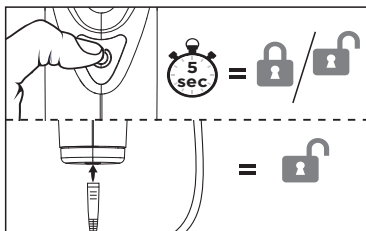


## Rechargeable Trimmer

### TROUBLESHOOTING FOR BOTH MODELS

If your trimmer does not seem to be charging, check the following before returning it for repair:

1. Check outlet to make sure it is working by plugging in another appliance.
2. Be sure the trimmer is properly connected to the recharging transformer, all the connections are secure and the switch on the trimmer is turned OFF.
3. If your electricity is connected to a master power switch, we suggest the trimmer be disconnected from the charger anytime the master switch is off. Leaving the unit plugged into a dead outlet or an unplugged charger will drain the battery.
4. If the trimmer does not run and it is completely charged, turn the unit ON and pinch or push the blades manually. Oil may have dried out between the blades, so they may be temporarily stuck together.
5. 9818 & WM80801 Models come with a travel lock. Please check this is deactivated by pressing down on the on/off switch for 5 secs or charging the trimmer before first use.



### BATTERY REPLACEMENT, REMOVAL AND DISPOSAL (for MIMH models only)

#### Battery Replacement

For battery replacement the entire, intact clipper/ trimmer should be sent to: Wahl (UK) Ltd Customer Services (the address can be found on the reverse of this booklet) or taken to a suitably qualified professional. The battery should only be replaced by the original manufacturers spare.

## Rechargeable Trimmer

### Battery Removal and Disposal

At the end of its life, when it will no longer take a full charge, the battery in your clipper/ trimmer must be removed and recycled/disposed of correctly. Batteries should be disposed of at an official collection point separately from the clipper/ trimmer. If you are having trouble removing the battery you can also return the product to Wahl (UK) Ltd Customer Services who will dispose of it in an environmentally safe way.

To remove the battery, follow these steps:

1. Unplug the transformer from the outlet, disconnect from trimmer and allow the battery to completely run down before disassembly.
2. Remove the blade by pushing on the teeth away from the trimmer head.
3. Remove the switch assembly from the front of the trimmer by inserting a small flat blade screwdriver into the silver surround, and then peel back the rubber from the case of the trimmer, and remove.
4. Insert the screwdriver into the slots in the plastic case to split it in two. The battery and motor unit can then be removed from the case.
5. Cut or break the wire stamps on both ends of the battery and remove the battery
6. Apply tape to both ends of the battery before recycling/disposing.

### **BATTERY REPLACEMENT, REMOVAL AND DISPOSAL (for Lithium battery models only)**

#### **Lithium-Ion Battery Replacement**

For battery replacement the entire, intact clipper or trimmer should be sent to: Wahl (UK) Ltd Customer Services (the address can be found on the reverse of this booklet) or taken to a suitably qualified professional. The battery should only be replaced by the original manufacturers spare, for safety reasons a substitute should not be used.

Do not attempt to remove the battery. Lithium-Ion batteries can explode, catch fire, and/or cause burns if disassembled, damaged or exposed to water or high temperatures.

#### **Lithium Battery Disposal**

Do not dispose of this product or the Lithium battery in the normal household waste.

## Rechargeable Trimmer

The product should be returned to Wahl Customer Services where we offer a take back service or taken to a local collection facility where they will be dealt with safely and sent for the appropriate recycling.

### TIPS FOR SUCCESSFUL STYLING

The first time you cut hair, cut only a small amount until you become accustomed to how long each guide comb leaves the hair. Always start by placing the largest guide comb on the clipper, then use shorter combs (or settings – if using adjustable guide combs) if a shorter length is desired.

Remember, between professional haircuts, the hair grows evenly all over the head and a light trimming at lower neck and sides may be all that is needed to bring back that neat, well groomed look.

For uniform cutting, allow the trimmer to cut its way through the hair. Do not force it through at a faster rate.

1. Start by combing the hair so it falls in its natural direction.
2. Place the largest guide comb onto your trimmer and start by trimming the sides from the bottom upwards. Hold the trimmer lightly against the hair, with teeth of the guide comb pointing up but flat against the head. Slowly lift the trimmer up and outward through the hair, cutting only a small amount at a time. Repeat around sides and back of head.

If you desire shorter hair, either change to a shorter guide comb (or setting – if using adjustable combs) or apply more pressure and less lift away from head with the present attachment.

This entire procedure requires practice, and it is always better to leave too much hair the first few haircuts.

For the top of the head, you will give a fairly short cut if you use the No.1 guide comb (if your kit includes the 1-1/4" or 1-1/2" guide comb, you may use this for a slightly longer cut.) With the teeth flat against the head, slowly start trimming from front to back. Again, it is better to leave the hair longer the first few haircuts.

## Rechargeable Trimmer

### **FADE CUT using a T-Blade**

1. Start at the temple and cut all the way around the head to establish ultimate location of the fade line. Always cut against the grain for the shortest cut. Don't force the blade through the hair. Let the trimmer do the work.
2. Next, cut around the head again and up the nape of the neck to the fade line, brushing away the cut hair as you go. Pull the scalp taut with the thumb for the closest cut. Turn the trimmer upside down when necessary to keep cutting against the grain. Make sure both sides of the head are even.
3. For the top of the head, cut with the grain using the individual guide comb attachments. The smaller the number of the comb, the shorter the cut. Comb or brush the hair as you cut for an even end result.
4. To complete the fade, blend the hair at the base line by trimming up and out across the line and against the grain all the way around the head. Then, repeat all around, turning the trimmer upside down and cutting downward. The final objective is to blend the hair so there is no real line, just a perfect fade from bald to very short hair. You can achieve this by using the #1 individual comb attachment. Continue combing and cutting until you achieve the desired effect.
5. To create a part, pick a spot off-centre. Pull the scalp tight and with the end of the blade perpendicular to the head, move the trimmer back and forth to cut a line. Comb through it and cut again to make sure the cut is precise.

### **SPECIAL FEATURES**

Your trimmer has been designed with several advanced features to help you get perfect results every time you trim. Your trimmer may be used to neatly trim goatees, beards, moustaches, neckline, sideburns around the ears and eyebrows, or anywhere you may need grooming. It also makes a great all-around family trimmer for mini haircuts and touch ups between trips to the barber or to clean up the shape of the neck.

A 6-Position Trimming Guide makes achieving a consistent trim easy every time (not included in all kits).

## Rechargeable Trimmer

The guide can be removed (providing a seventh cutting position) and reattached without changing the pre-set cutting length, so once you have found the perfect length, there's no guesswork in achieving it every trim. The trimming guide is a two-piece assembly, consisting of a base and a comb. It should not be disassembled. To attach the guide, simply slide it on at a slight angle and press the release tab down to secure in position.

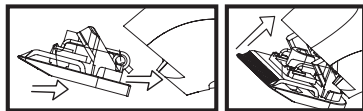
To remove the guide, gently push up on the release tab and slide the assembly away from the trimmer. Adjust the trimming length by pressing on the thumb lever and moving the comb forward or backward to the desired setting.



### DETACHABLE BLADE SYSTEM

A Detachable blade system enables you to quickly change from a standard-width blade for full grooming to a narrow-width blade for detail trimming around a moustache, goatee, or anywhere to define the hair line and clip any stray whiskers.

To remove attachment, simply pull top edge of blade away from body unit. To attach, align back tab of attachment head to cavity on the inner edge of trimmer unit.

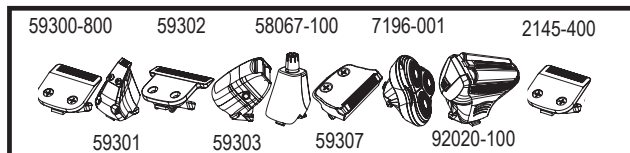


Should blades become damaged or dull or if you want replacement attachment heads for your trimmer, you can purchase these from Wahl (UK) Ltd.

## Rechargeable Trimmer

The following attachments will all fit on your trimmer but your product may not include all these attachment heads. These can be ordered from our Customer Services department

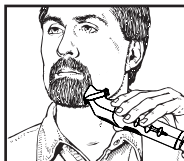
Models	Attachment Head:	Wahl Part Number
9854, 9860, 9818	Trimmer Head:	#59300-800
9864	Detail Head:	#59301
WM80801	T-Blade Head:	#59302
	Shaver Head:	#59303
	Ear/ Nose Head:	#58067-100
	Detail Shaver Head:	#59307
	Full Metal Washable:	#2145-400



## TRIMMING AND EDGING YOUR FACIAL HAIR

The following are suggested trimming steps and trimmer positions. You may find different procedures work better for you.

1. Comb your beard in the direction that it grows to help reveal stray hairs that may be longer than the others.
2. Attach the 6-position trimming guide to trim and taper your beard if included in your kit. Begin with the guide set at a long trimming length. Trim toward your chin in smooth, overlapping strokes, following the lay of your beard. If you trim against the way your beard naturally lays, the trimmer will cut the hair much shorter and the result may be patchy.



#1	Stubble Length	(2 mm)
#2	Short	(4 mm)
#3	Medium Short	(6 mm)
#4	Medium	(8 mm)
#5	Medium Long	(10 mm)
#6	Long	(12 mm)

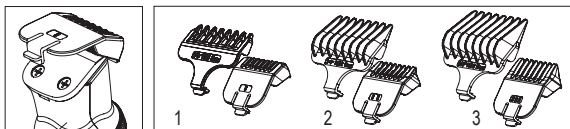
## Rechargeable Trimmer

3. To cut the outline of your beard, remove the trimming guide. Starting under your chin and working back toward your jawbone and ears, cut the outer perimeter of your beard underneath the jawbone. Continue the line all the way up to the ears and hairline.
4. Accentuate your beard line by using the trimmer in a downward motion. Start at the line you've created and, working from the chin back toward the ears, trim the area right under your beard line.
5. Define the upper part of your beard using the same technique.
6. For a neater finished look, replace attachment blade with the detail blade. Use this blade for fine, detail trimming anywhere it is needed, such as at the sideburns near the ears, goatees, etc.



### TRIMMING WITH ATTACHMENT COMBS

Your Trimmer may include three trimming attachments; stubble, medium and long. The stubble guide has 1 bar, the medium-cut attachment has two bars and the long-cut attachment has three bars. These attachments are ideal for blending, tapering and defining beards, as well as for achieving a “close trim” stubble look around the face. To use the attachments, go with the hair direction. To achieve closer looks, go against the hair direction.



### TRIMMING NOSE HAIR USING DETAILER HEAD

Make sure the nasal passages are clean. Slowly move the detailer in and out of each nostril, no more than 1/4-inch deep.

## Rechargeable Trimmer

### TRIMMING EAR HAIR

Make sure the outer areas of the ears do not contain any wax. Hold the ear flat with one hand and carefully insert detailer no more than 1/4-inch into the outer ear.



**WARNING:** DO NOT INSERT THE DETAILER OR ANY OTHER FOREIGN OBJECT INTO THE INNER EAR. FOR HAIR GROWING ON THE OUTSIDE OF THE EAR, SIMPLY MOVE THE DETAILER SLOWLY ALONG THE EDGES OF THE EAR.

### TRIMMING EYEBROWS

Slowly move detailer to neatly trim stray hairs. For precise, even trimming, slowly move the detailer closer or farther away from eyebrows to achieve desired length. Do not press against brow as it may remove too much hair.

### TRIMMING EYEBROWS WITH COMB

Snap on the No. 1 Comb on your trimmer head. Slowly move the trimmer to neatly trim stray hairs. Do not press hard against brow as it may remove too much hair. You may also use your trimmer blade with the #2 or #3 guide comb. Move the trimmer with the direction of the hair flow (from the bridge of your nose to the temple). Be sure to mind your eyelashes as you trim.

### DETAILING NECKLINES, SIDEBURNS, MOUSTACHES & BEARDS using trimmer head.

Slowly move trimmer downward on desired areas to neatly trim and shape.

### TRIMMING ARM & LEG HAIR using trimmer head.

Simply glide the trimmer over your arm or leg until desired hair length is achieved. The first time you trim the hair, start by using a longer setting on the guide comb on the trimmer, then use progressively shorter settings if a shorter length is preferred.

### TRIMMING CHEST & STOMACH using trimmer head.

Glide the trimmer over your torso region, in an upward motion until desired hair length is achieved. For tight, scratch-free trimming, use the #1 guide comb.



## Rechargeable Trimmer

### FOR THE CLOSEST LOOK

After trimming, attach the shaver head. The shaver makes for the perfect tool to groom the total body. Using the same technique, as mentioned prior, you can groom wherever you feel a need. Shave against hair growth while stretching the skin. After every use, remove the shaver foil by pressing both side buttons and carefully clean using cleaning brush provided.

### TRIMMING PRIVATE AREAS with the trimmer & detailer head.

1. Volume reduction using trimmer head. Attach guide comb and select a long trimming length. Begin trimming, starting at the top and working down. Use progressively closer settings to get the "look" and length you prefer.
2. For hard to reach or tight areas, use the detailer head. Always pull skin taut. Then slowly move the detailer through area to trim until desired look is accomplished.
3. Shave in your private areas by gently shaving in the desired area and always keep the skin taut.

### WIRING



**WARNING:** IF THE TRANSFORMER IS DAMAGED IT MUST BE REPLACED IN ORDER TO AVOID A HAZARD. THIS PRODUCT MUST ONLY BE USED WITH THE TRANSFORMER SUPPLIED. SHOULD A REPLACEMENT BE REQUIRED CONTACT WAHL CUSTOMER SERVICES.

### WASTE ELECTRICAL & ELECTRONIC EQUIPMENT DIRECTIVE 2002/96/EC (WEEE)



At the end of this products life it should not be disposed of with general household waste.

Care should be taken to dispose of in a suitable manner in accordance with your Local Authority regulation.

## Rechargeable Trimmer

### **GUARANTEE**

#### **LITHIUM BATTERY MODELS**

This product is guaranteed against defects in material and workmanship for a period of 5 years from the date of original purchase or receipt as a gift.

Should this product become defective during the guarantee period, return it to the store of purchase together with your proof of purchase for repair or replacement.

Alternatively within the guarantee period you can return the product to Wahl (UK) Ltd who will repair any such defect or elect to replace the product or any part of it, without charge, provided there is proof of purchase. Should a replacement be offered this will not extend the original guarantee period.

The guarantee becomes invalid in the case of misuse, alteration or repair by unauthorised persons.

This guarantee does not include blades, cables, shaver heads, foils and cutters etc., which are consumable parts.

This product is designed for domestic use only and use within a professional environment will invalidate the guarantee.

This guarantee in no way affects your rights under law in the United Kingdom.

## Rechargeable Trimmer

### **GUARANTEE**

#### **NiMH BATTERY MODELS**

This product is guaranteed against defects in material and workmanship for a period of 3 years from the date of original purchase or receipt as a gift.

Should this product become defective during the guarantee period, return it to the store of purchase together with your proof of purchase for repair or replacement.

Alternatively within the guarantee period you can return the product to Wahl (UK) Ltd who will repair any such defect or elect to replace the product or any part of it, without charge, provided there is proof of purchase. Should a replacement be offered this will not extend the original guarantee period.

The guarantee becomes invalid in the case of misuse, alteration or repair by unauthorised persons.

This guarantee does not include blades, cables, shaver heads, foils and cutters etc., which are consumable parts.

This product is designed for domestic use only and use within a professional environment will invalidate the guarantee.

This guarantee in no way affects your rights under law in the United Kingdom.

WAHL (UK) LTD  
STERLING HOUSE  
CLIPPER CLOSE  
RAMSGATE, KENT  
CT12 5GG

CUSTOMER SERVICES T: 01227 740066  
[www.wahl.co.uk](http://www.wahl.co.uk)

Form No. ZB895  
Rev.1 12-19