

## #83041 Spring Run Farmhouse Kit

designed by Adam Koch of Dollhouse Therapy  
Step-by-step assembly instructions

Copyright miniatures.com 2022, 2025

### SUPPLIES NEEDED:

Masking tape  
Glue (such as #1249 Weldbond)  
Wood Filler  
Door hardware  
Exterior finishes

See [miniatures.com](https://miniatures.com) for finishing ideas and materials

### GENERAL INSTRUCTIONS

- Identify and inspect all parts using the Parts List.
- Thoroughly read the directions before starting.
- Set up a dedicated work area to avoid the need to unpack, repack, or move the project frequently.
- Use a clean, level, and dry work surface protected from glue spills.
- Dry fit the parts using masking tape to ensure everything aligns correctly before permanent assembly.



**Tip:** Plan the finishes for the interior and exterior at the dry-fit stage, before final/permanent assembly. It is easier to finish the panels as flat surfaces. Disassemble and finish as desired, then reassemble using glue.

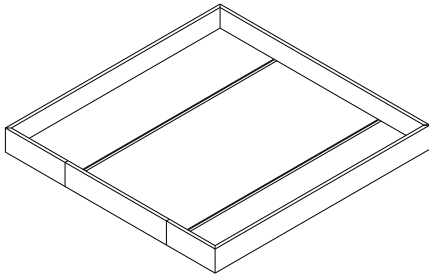
## Assembly Instructions

### Foundation

Parts you will need in this section:

- Foundation Floor
- Wall FFB (2)
- Wall FR
- Wall FLA
- Wall FLB
- Wall FLC
- Brace (2)
- Ground Floor

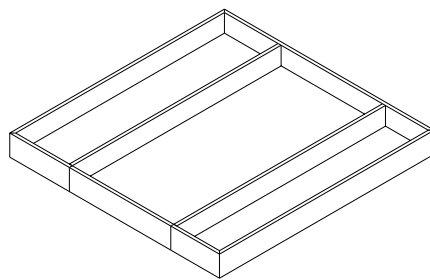
1. Place **Foundation Floor** flat on the work surface. Orient it so that its two grooves are facing up and are running horizontally. The edge of the **Floor** that is facing forward is the **Front** of the house.
2. Glue a **Wall FFB** to **Floor**. It goes on the forward-facing edge of **Floor** and parallel with the grooves in **Floor**. Its notch sits over the edge of **Floor**.
3. Glue **Wall FR** to the right edge of **Floor** and to the adjacent **Wall FFB** that is already in place.
4. Align all joints and tape in place.
5. Glue the second **Wall FFB** to the back edge of **Floor**. It will run parallel with the grooves in **Floor**. Also glue **Wall** to the adjacent **Wall FR** that is already in place.
6. Align all joints and tape in place.
7. Glue **Wall FLA** to the left edge of **Floor** and to the adjacent **Wall FFB** that is already in place.
8. Align all joints and tape in place.



9. Repeat with **Wall FLB**. Note that this wall may be left removable to allow access to wiring.

10. Repeat with **Wall FLC**.

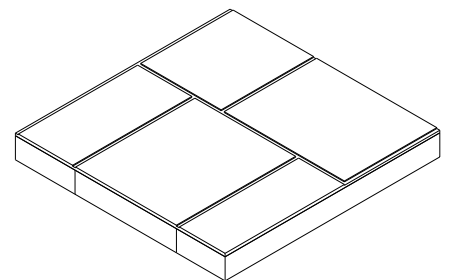
11. Align all joints and tape in place.



12. Fit and glue both **Braces** into the grooves on the **Floor** and between the **Walls**. Tape in place.

13. Orient the foundation assembly so that the front is facing forwards.

14. Orient **Ground Floor** so that the two grooves are on the left and the single groove is on the right. The house front will be facing forwards.



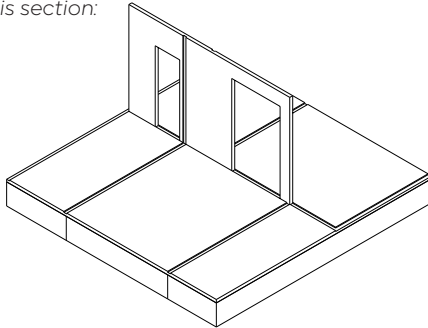
15. Glue **Ground Floor** on top of all **Walls** and **Braces**. The edges of **Floor** are flush with the outside of all **Walls**.

16. Align all joints, tape in place, and let the glue dry.

## Ground Level

*Parts you will need in this section:*

- Wall G1
- Wall G2
- Wall G3
- Corner
- Arch Filler (2)
- First Floor

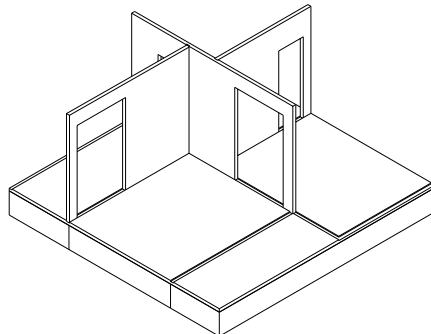


1. Orient the foundation assembly so that the two grooves of the **Ground Floor** are on the left and the single groove is on the right. The front of the house will be facing forwards.

2. Fit and glue **Wall G1** into the longest groove on **Floor**. Orient **Wall** so that the small doorway is towards the back of the house. The back edge of **Wall** is flush with the notch on **Floor** along the back of the house. Use a straight edge to assure **Wall** does not extend into this notch. Use a heavy tall object to temporarily help keep **Wall** vertical.

3. Fit and glue **Wall G2** into the back left groove on **Floor** and into its corresponding groove on **Wall G1**. It is flush with the outside edge of **Floor**.

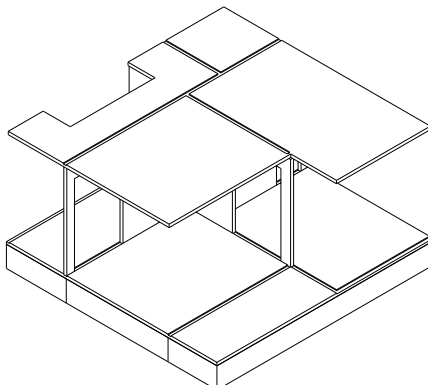
4. Align all joints and tape in place.



5. Fit and glue **Wall G3** into the right groove on **Floor** and into its corresponding groove on **Wall G1**. It is flush with the outside edge of **Floor**.

6. The **Corner** can be used or not as desired. Also, it can be attached permanently or made removable. The space behind it is useful as a chase for wiring.

7. Fit and glue the **Arch Fillers** into the exposed grooves under both arches.



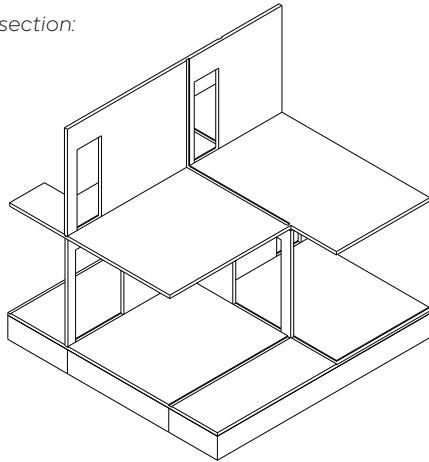
8. Fit and glue **First Floor** on top of all **Walls**. The edges of **Floor** are flush with the side edges of all **Walls**.

9. Align all joints, tape in place, and let the glue dry.

## 1st Level

Parts you will need in this section:

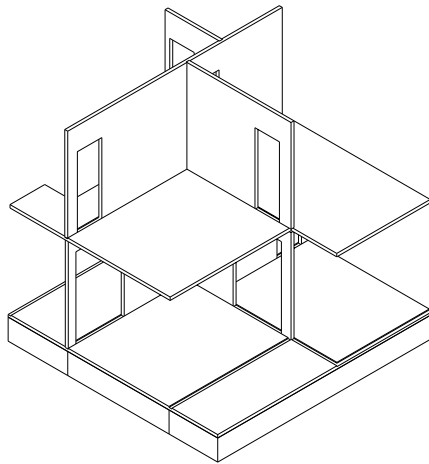
- Wall 1A
- Wall 1B
- Wall 1C
- Corner
- Second Floor



1. Orient the assembly so that the front is forward facing.

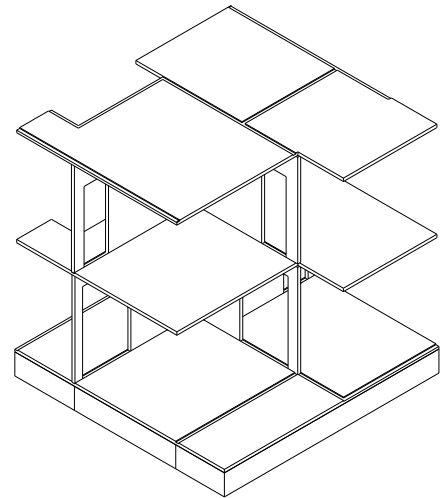
2. Fit and glue **Wall 1A** onto **First Floor**. It fits into the middle groove that runs from side to side on **Floor**. Orient it so that the doorway that is closest to the wall edge is at the left of the house. The side edges of **Wall** are flush with the side edges of **Floor**. Use a heavy tall object to temporarily help keep **Wall** vertical.

3. Fit and glue **Wall 1B** into the front groove on **Floor** and its corresponding groove on **Wall 1A**. Orient it so that the doorway is towards the front of the house. Its front edge is flush with the front edge of **Floor**.



4. Fit and glue **Wall 1C** into the back groove on **Floor** and into the groove on **Wall 1A**.

5. The **Corner** can be used or not as desired. Also, it can be attached permanently or made removable. The space behind it is useful as a chase for wiring.



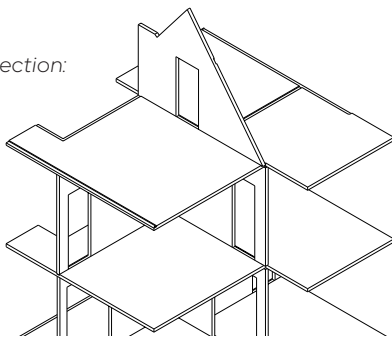
6. Fit and glue **Second Floor** on top of all **Walls**. The edges of **Floor** are flush with side walls and overhang front and back walls.

7. Align all joints, tape in place, and let the glue dry.

## 2nd Level

Parts you will need in this section:

- Wall 2A
- Wall 2B
- Wall 2C
- Wall 2D



1. Orient the assembly so that the front is forward facing.

2. Fit and glue **Wall 2A** onto **Second Floor**. It fits into the groove on **Floor** that runs from front to back of the house. Orient **Wall** so that the angled edge is towards the front of the house. The back edge of **Wall** is flush with the back edge of **Floor**. Use a heavy tall object to temporarily help keep **Wall** vertical.

3. Fit and glue **Wall 2B** onto **Floor**. It goes against the left side of **Wall 2A** at the back of the house. It fits into the notch on **Floor** and is flush with the outside edge of **Floor**.

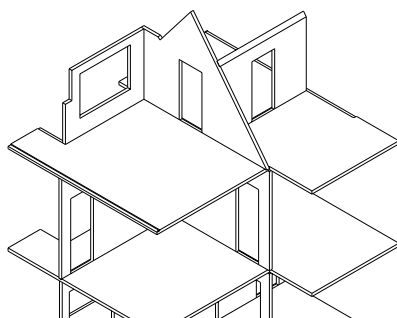
4. Align all joints and tape in place.

5. Fit and glue **Wall 2C** onto **Floor**. It goes against the left edge of **Wall 2B** at the back of the house. It fits into the notch on **Floor** and is flush with the outside edge of **Floor**.

6. Align all joints and tape in place.

7. Fit and glue **Wall 2D** onto **Floor**. It goes into the right front groove on **Floor** and against the right side of **Wall 2A**.

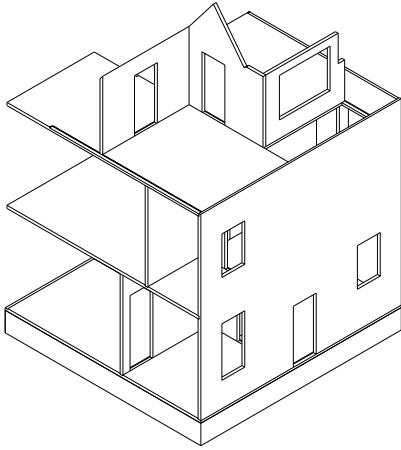
8. Align all joints, tape in place, and let the glue dry.



## Outer Walls

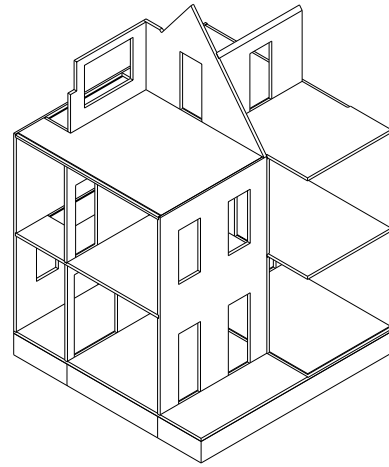
Parts you will need in this section:

- Front Wall
- Front-Door Wall
- Gable Wall
- Back Wall
- Wall Filler (2)



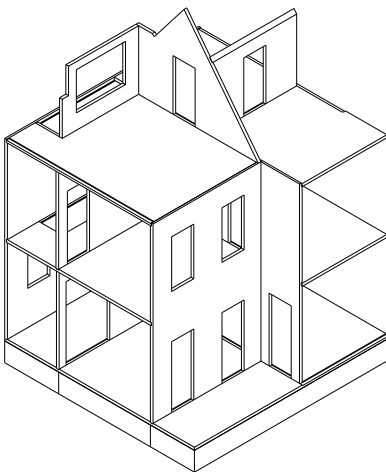
1. Fit and glue **Back Wall** in place. It sits in the notch on **Ground Floor**. It receives **First Floor** into its groove, and it receives **Second Floor** into its notch at the top edge. Its side edges are flush with the edges of all **Floors**.

2. Align all joints and tape in place.



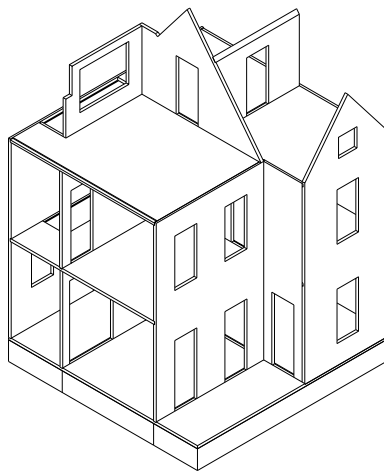
3. Fit and glue **Front Wall** in place. It sits in the notch on **Ground Floor**. It receives **First Floor** into its groove, and it receives **Second Floor** into its notch at the top edge. Its left edge is flush with the left edges of all **Floors**.

4. Align all joints and tape in place.



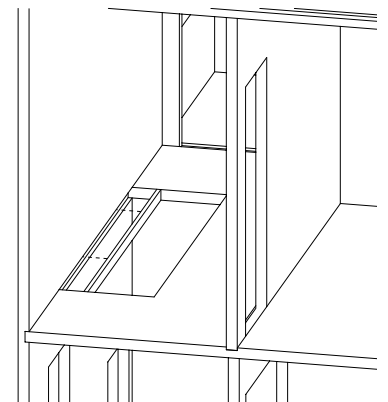
5. Fit and glue **Front-Door Wall** in place. It fits in the groove on **Ground Floor**. It receives **First Floor** into its groove, and it receives **Second Floor** into its notch at the top edge.

6. Align all joints and tape in place.



7. Fit and glue **Gable Wall** in place. It fits in the notch on **Ground Floor**. It receives **First Floor** and **Second Floor** into its two grooves.

8. Align all joints and tape in place.

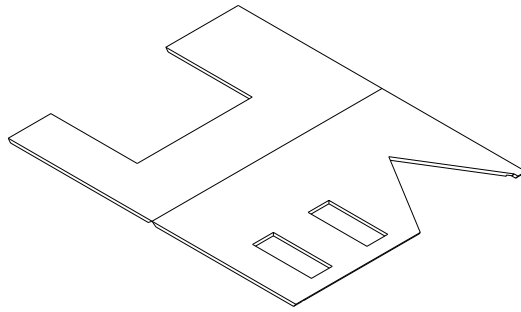


9. Fit and glue both **Wall Fillers** into the grooves at the 1st and 2nd levels in the stairwell.

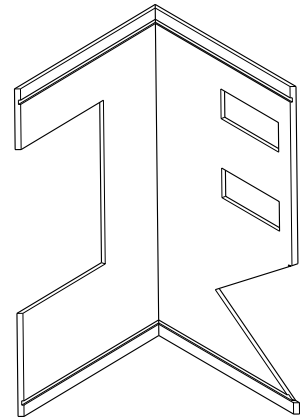
## Main Roof

Parts you will need in this section:

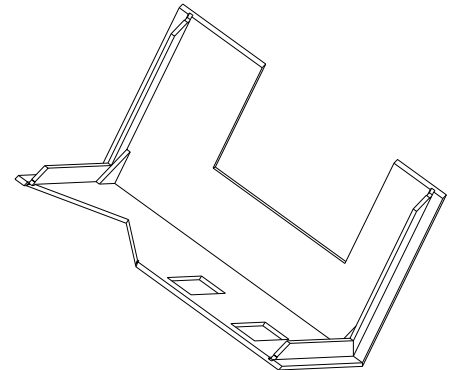
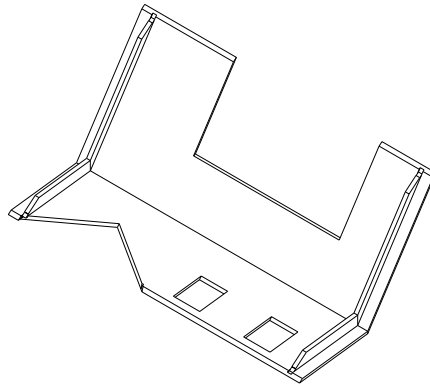
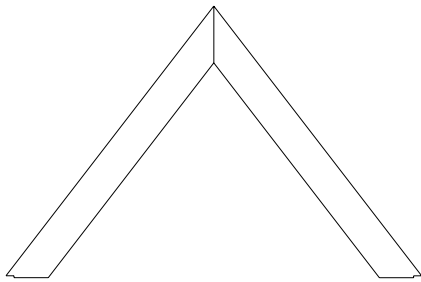
- Roof A
- Roof B
- Wall Q (4)
- Support Q (2)
- Floor Filler (2)
- Roof C
- Roof D
- Chimney



1. Place **Roof A** and **Roof B** flat on the work surface. Orient them so that they are side by side with their beveled edges facing down, touching, and aligned.
2. Tape them together, edges touching, with several pieces of tape.
3. Gently flip the assembly over so that the beveled edges are now facing up.
4. Add glue to both beveled surfaces.



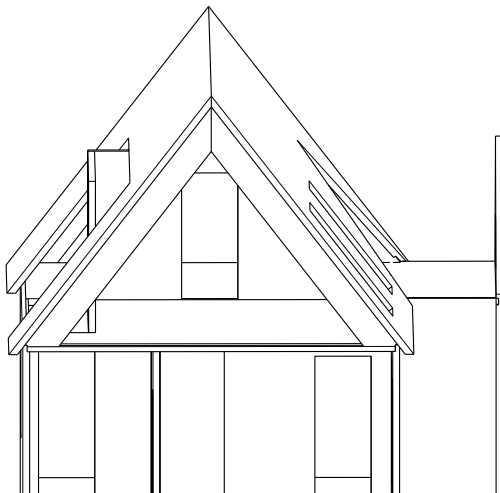
5. Gently lift the assembly while closing it like a book. Continue until the beveled edges come together to form the roof peak. Stand up the roof assembly, like an open book, on either edge.
6. Tape in place and set the roof assembly aside while letting the glue set.



7. Place all four **Walls Q** flat on the work surface.
8. Glue two **Walls** together at their angled edges to form a peak.
9. Align the joint and tape in place.
10. Repeat for the other two **Walls**.

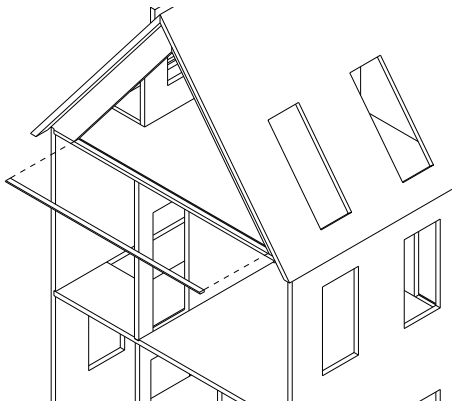
11. Gently fit and glue the two wall assemblies into the roof assembly. They fit into the grooves that are on the underside of the roof and towards the outer edges of the roof.

12. Glue a **Support Q** over the peak joint and on the inside so that it is out of view.
13. Repeat for the other **Support Q** on the other wall assembly.
14. Align all joints and tape in place.

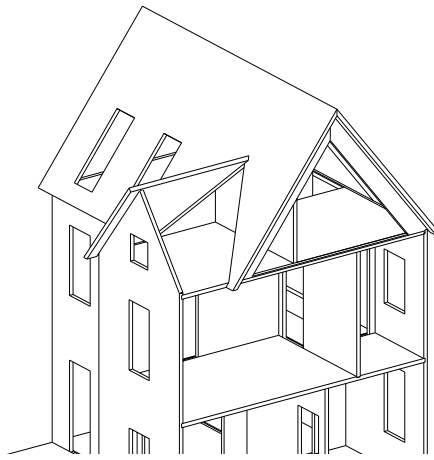


15. Place the roof assembly on top of the house. Use the gable-roof line for orientation. **Walls Q** fit into the notches on the side edges of **Second Floor**. The roof hangs over the outer walls to form the eaves.

16. Align all joints and tape in place.

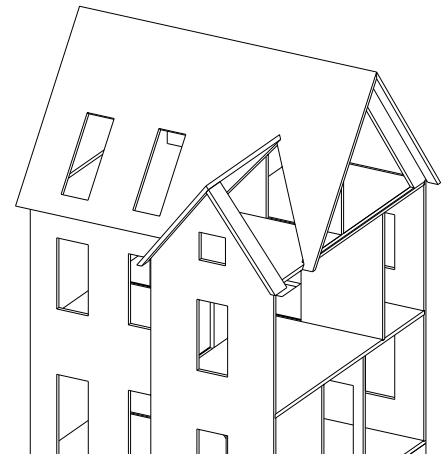


17. Add **Floor Fillers** into notches on both side edges of **Second Floor**.



18. Glue **Roof C** to **Roof A** and to **Gable Wall**. It is flush with the inside edge of **Roof A**. Its groove receives **Gable Wall**.

19. Align all joints and tape in place.



20. Glue **Roof D** to **Roof C** and to **Gable Wall**. Its groove receives **Gable Wall**. The beveled peak of **Roof D** fits under the beveled peak of **Roof C**.

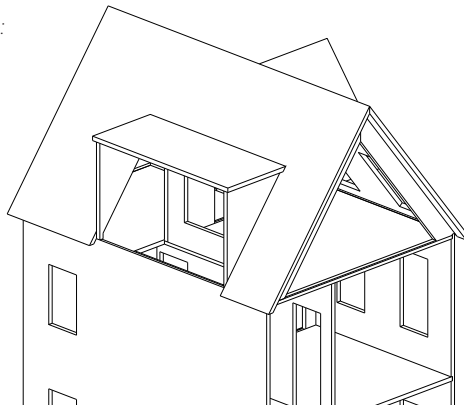
21. Align all joints, tape in place, and let dry.

22. Place the chimney on the roof. It can go anywhere along the roof line.

## Dormer Roofs

*Parts you will need in this section:*

- Large-Dormer Wall (2)
- Large-Dormer Roof
- Small-Dormer Wall (4)
- Small-Dormer Roof (2)

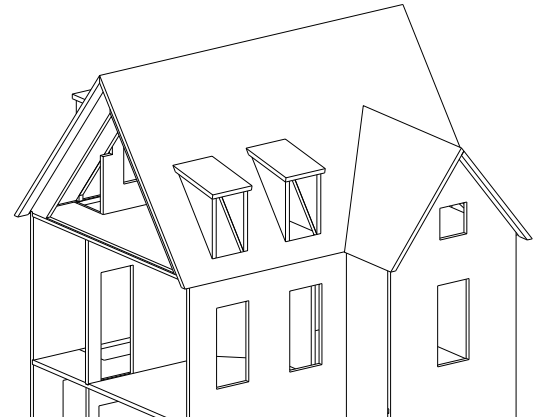


1. Glue both **Large-Dormer Walls** into the dormer cut out of **Roof B**. Their top points rest on the beveled edge of **Roof B** and their bottom points rest on the top edge of **Back Wall**. The long edge of **Large-Dormer Walls** is flush with the inside of **Roof B**.

2. Align all joints and tape in place.

3. Glue **Large-Dormer Roof** to **Roof B** and to the top edges of both **Large-Dormer Walls** and to the top edges of **Walls 2A** and **2B**. It rests on the outside of **Roof B** and its side edges are flush with the **Large-Dormer Walls**.

4. Align all joints, tape in place, and let glue dry.



5. Glue **Small-Dormer Walls** into the dormer cut outs of **Roof A**. The wall sits on the roof and is flush with the window opening.

6. Align all joints and tape in place.

7. Glue both **Small-Dormer Roof** to **Roof A** and to the top edges of all four **Small-Dormer Walls**.

8. Align all joints, tape in place, and let glue dry.

## 1st Level Stairs

Parts you will need in this section:

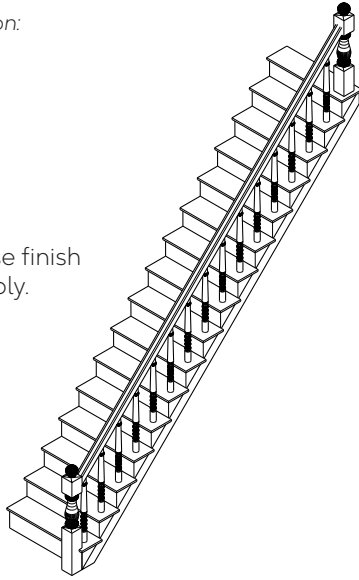
- Steps
- Treads (16)
- Spindles (15)
- Handrail
- Newel Post (2)
- Hall Handrail

- Paint or stain and otherwise finish all stair parts before assembly.

## 2nd Level Stairs

1. Repeat 1-7 of the 1st Level Stairs.

2. Glue the Hall Handrail onto **First Floor**. It is flush with the inside edge of the stairwell.



1. Glue Treads onto **Steps**. Each **Tread** is flush with each step on the left and overhangs on the right.
  2. Insert **Spindles** into tread holes.
  3. Glue a tall **Newel Post** to the bottom steps.
  4. Glue a short **Newel Post** to the top step.
  5. Align all joints and tape in place.
  6. Prop the assembly up on the work surface so that the **Spindles** and **Newel Post** are standing upright.
  7. Add glue sparingly to the **Handrail** inside and at the tips. Place **Handrail** on top of **Spindles** and against **Newel Posts**.
  8. Put the assembly aside to dry.
- Finish all floors and walls before permanently installing stair and hall handrail assemblies.

## Outdoor Stairs

Parts you will need in this section:

- Entrance Stair (2)

1. Place an **Entrance Stair** in front of the porch between the entry pergola columns.
2. Place the other **Entrance Stair** in front of the back door.

## Windows

Parts you will need in this section:

- W1 (6)
- W2 (2)
- W3 (2)
- W4 (2)
- W5
- W6
- S1 (12)
- S2 (4)
- S3 (4)
- Block (20)
- Inside trim
- Windowpanes

1. Match all window **Inside Trim** with **Windows**. Note that W4 does not have inside window trim.

2. Assemble all window **Inside Trim**. Doing so on graph paper can help assure the assembly is square.

3. Paint the outside and inside frames of all **Windows**.

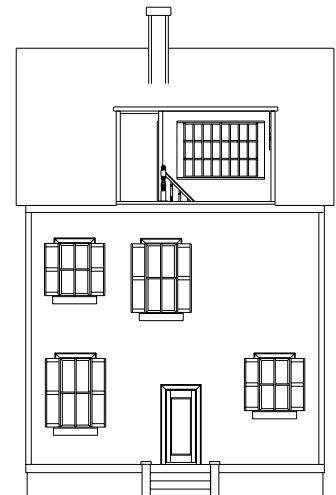
4. Paint the front and back of all **Shutters**.

5. Once your dollhouse's exterior walls are painted and finished, add a couple of drops of glue in and around the exterior window openings. Place the windows into the openings, according to the diagrams provided here, so that the exterior frames sit on the exterior of the dollhouse. Tape in place.

6. Once your dollhouse's interior walls are painted and finished, insert the **Windowpanes**, and glue the inside frame assembly onto the walls. This secures the window assemblies in the place.

7. Glue a **Block** to the back center of every **Shutter**.

8. Glue **Shutters** to the outside walls and along the outside edges of all **Windows W1, W2, and W3**.





## Doors

Parts you will need in this section:

- Front Door
- Back Door
- Transom Doors (6)
- Regular Doors (3)
- Transom Arch (2)
- Inside Trim

1. Match all door **Inside Trim** to **Doors**.
  2. Assemble all door **Inside Trim** and **Transom Arch**. Doing so on graph paper can help keep the assemblies square.
  3. Paint or stain all **Doors** before installing them. Finish the walls before installing the **Doors**.
  4. Place the **Doors** into their wall openings. When deciding which way a door will swing, and so on which side of the wall to place the **Door**, remember that a door usually swings into a room.
  5. Glue the **Doors** in place.
  6. Use the included trim to mirror the door frame on the back side of the wall.
- Finish **Doors** with hardware of your choice (not included).

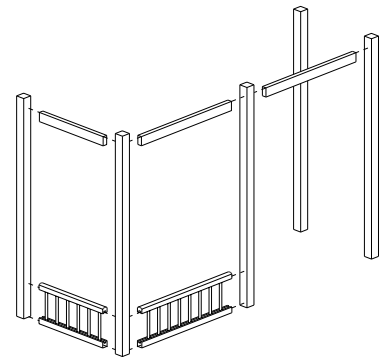
## Pergola

Parts you will need in this section:

- Column (5)
- Long Beam (2)
- Short Beam
- Long Fence
- Short Fence
- Pergola Frame

• Note that working on graph paper will help assure the work is square.

1. Place two **Pergola Columns** flat on the work surface.
2. Glue the **Pergola Short Beam** between the **Pergola Columns**. Place it about 1" down from the top of the **Pergola Columns**. Distance from the top of the **Pergola Columns** is a personal preference.
3. Glue the **Pergola Short Fence** between the **Pergola Columns**. Place it about  $\frac{3}{8}$ " up from the bottom of the **Pergola Columns**. Distance from the bottom of the **Pergola Columns** is a personal preference.
4. Align all joints, tape in place, and let the glue dry.



5. Repeat for the **Pergola Long Beam** and the **Pergola Long Fence**. They should both be the exact same height as the **Pergola Short Beam** and **Pergola Short Fence** in the assembly.

6. Glue another **Pergola Column** to the left side of the assembly.

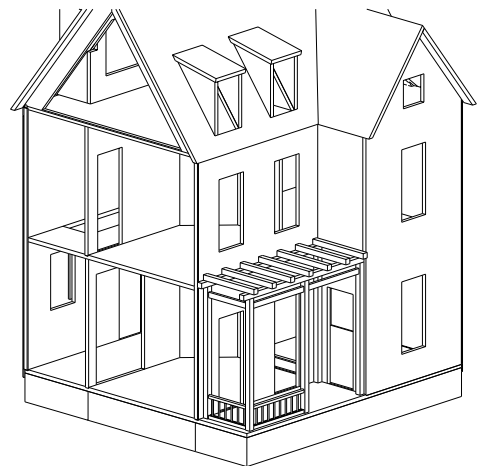
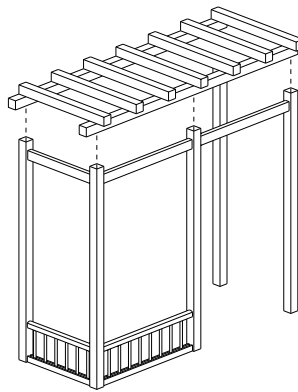
7. Square up the assembly, align all joints, tape in place, and let the glue dry.

8. Glue the remaining **Pergola Long Beam** and **Pergola Column** to the left of the assembly. They should be the exact same height as the previous **Pergola Beams**.

9. Square up the assembly, align all joints, tape in place, and let the glue dry.

10. Glue the **Pergola Frame** assembly to the top of the **Pergola Columns**. The assembly should align on all sides.

11. Square up the assembly, align all joints, tape in place, and let the glue dry.

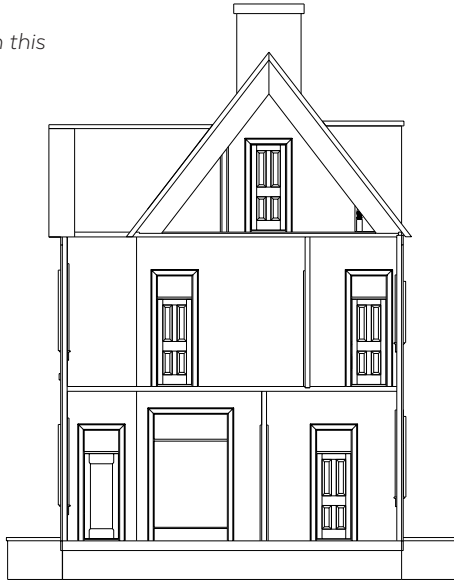




## Right Trim

Parts you will need in this section:

- TC2 (2)
- TB4



1. Orient the house so that the right side is facing forward.
2. Glue **TB4** to **Wall FR**. Its outside edges are flush with **Back Wall** and **Front Wall**.
3. Glue **TC2** to the left edge of the house. Its outside edge is flush with **Gable Wall**. Its bottom end is flush with **TB4**.
4. Glue the other **TC2** to the right edge. Its outside edge is flush with **Back Wall**. Its bottom end is flush with **TB4**.

## Left Trim

Parts you will need in this section:

- TC8
- TC2 (2)
- TD2
- TB1
- TB2
- TB3

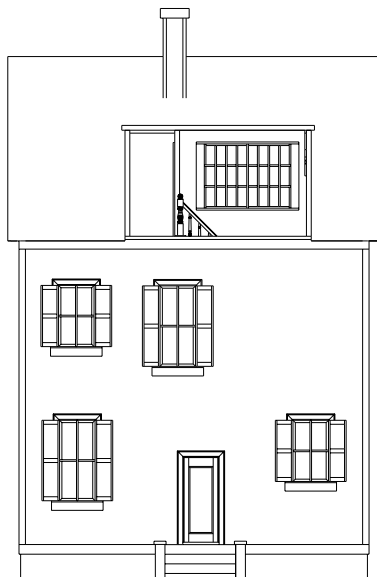
1. Orient the house so that the left side is facing forward.
2. Glue **TB3** to **Wall FLA**. One end is flush with **Back Wall**.
3. Glue **TB2** to **Wall FLB** and to **TB3**.
4. Glue **TB1** to **Wall FLC** and to **TB2**.
5. Glue **TC2** to the left edge. Its outside edge is flush with **Back Wall**. Its bottom end is flush with **TB3**.
6. Glue another **TC2** to the right edge. Its outside edge is flush with **Front Wall**. Its bottom end is flush with **TB1**.



## Back Trim

Parts you will need in this section:

- TC1 (2)
- TD1
- TA3
- TA4



1. Orient the house so that the back is facing forward.
2. Glue **TA4** to the bottom left of **Back Wall**. It overlaps **TB4** to form a clean corner.
3. Glue **TA3** to the bottom right of **Back Wall**. It overlaps **TB3** to form a clean corner. Note that the back stair will fit in the gap.
4. Glue **TC1** to the left edge of **Back Wall**. It runs down along the edge of the house and overlaps **TC2** to form a clean corner.
5. Glue another **TC1** to the right edge of **Back Wall**. It runs down along the edge of the house and overlaps **TC2** to form a clean corner.
6. Glue **TD1** to the top of **Back Wall**. It will be flush to the left side edges of wall. It overlaps **TC2** on both sides to form a clean corner.

## Front Trim

Parts you will need in this section:

- TA1 (2)
- TA2
- TD3
- TD4 (2)
- TC1 (2)
- TC6
- TC7
- TD2
- TC8
- TC3

1. Orient the house so that the front is facing forward.
2. Glue both **TD4s** onto **Gable Wall**.
3. Align the angled joint at the peak and tape in place.
4. Glue a **TA1** to the top of **Gable Wall** and tightly against both **TD4s**. **TA1** will be flush with the outside edges of **Gable Wall**.
5. Glue **TD3** to the top of **Front Wall**. It will be flush with the left edge of **Front Wall**.
6. Put the pergola in place.
7. Glue **TC6** to the top left edge of **Front Wall**. It joins the **TD3** and runs down along the edge of the house. It overlaps **TC2** to form a clean corner.
8. Glue **TC7** to the bottom left edge of **Front Wall**. It run up from the porch floor along the left edge of the house and overlaps **Side Trim TC2** to form a clean corner. Note that the **Rafter** fits between **TC6** & **TC7**.
9. Glue **TA2** to the front left corner of the porch. Its top edge is flush with the floor of the porch. Its left edge overlaps **TB1** to form a clean corner.



10. Glue **TD2** to the top of **Front Door Wall**. Its outside edge will be flush with **Gable Wall**.
11. Glue **TC8** to the top left-facing edge of the **Gable Wall**. Its outside edge is flush with the front surface of **Gable Wall**. Note that the bottom of **TC8** will join the pergola.
12. Glue **TC3** to the bottom left-facing edge of **Gable Wall**. Its outside edge is flush with the front surface of **Gable Wall**. Note that the top of **TC3** will join the pergola.
13. Glue **TC1** to the top left of **Gable Wall**. It joins **TA1** and runs down along the edge of **Gable Wall**. It overlaps **TC3** and **TC8** to form a clean corner.
14. Glue **TC1** to the right edge of **Gable Wall**. It joins the **TA1** and runs down along the edge of the house. It overlaps **TC2** to form a clean corner.
15. Glue **TA1** to the bottom of **Gable Wall** and tightly against **TC5** and **TC1**. It overlaps **TB4** to form a clean corner.

Assembly is now complete.

## Part List

### Foundation

- A01** (2) Wall FFB  
- 1/4"W x 3/8"H x 27"D
- A02** Wall FR  
- 1/4"W x 3/8"H x 26<sup>23</sup>/64"D
- A03** Wall FLC  
- 1/4"W x 3/8"H x 7 1/2"D
- A04** Wall FLB  
- 1/4"W x 3/8"H x 12<sup>3</sup>/4"D
- A05** Wall FLA  
- 1/4"W x 3/8"H x 6 1/8"D
- A06** Foundation Floor  
- 25<sup>29</sup>/32"W x 3/8"H x 26<sup>17</sup>/32"D
- A07** Ground Floor  
- 26<sup>3</sup>/8"W x 1/2"H x 27"D
- A57** (2) Brace  
- 2 1/4"W x 3/8"H x 26 1/4"D

### Ground Floor

- A15** Wall G1  
- 11<sup>23</sup>/32"W x 3/8"H x 20 1/4"D
- A14** Wall G2  
- 11<sup>23</sup>/32"W x 3/8"H x 15<sup>3</sup>/32"D
- A16** Wall G3  
- 11<sup>23</sup>/32"W x 3/8"H x 11<sup>23</sup>/32"D
- A25** Corner  
- 5"W x 3/8"H x 11<sup>5</sup>/8"D
- A64** (2) Arch Filler  
- 3/32"W x 3/8"H x 5 11/16"D
- A08** First Floor  
- 25<sup>7</sup>/8"W x 3/8"H x 27"D

### 1st Level

- A17** Wall 1A  
- 11<sup>23</sup>/32"W x 3/8"H x 27"D
- A18** Wall 1B  
- 11<sup>23</sup>/32"W x 3/8"H x 13<sup>11</sup>/32"D
- A19** Wall 1C  
- 11<sup>23</sup>/32"W x 3/8"H x 6<sup>27</sup>/32"D
- A25** (2) Corner  
- 5"W x 3/8"H x 11<sup>5</sup>/8"D
- A09** Second Floor  
- 25"W x 3/8"H x 27"D

### 2nd Level

- A20** Wall 2D  
- 9 1/4"W x 3/8"H x 11<sup>23</sup>/32"D
- A21** Wall 2A  
- 13<sup>15</sup>/32"W x 3/8"H x 17"D
- A22** Wall 2B  
- 10<sup>5</sup>/8"W x 3/8"H x 8<sup>11</sup>/32"D
- A23** Wall 2C  
- 3<sup>5</sup>/8"W x 3/8"H x 4<sup>51</sup>/64"D

### Outer Walls

- A10** Front Wall  
- 15"W x 3/8"H x 24<sup>3</sup>/32"D
- A11** Front-Door Wall  
- 1/4"W x 3/8"H x 24<sup>3</sup>/32"D

- A12** Gable Wall  
- 12"W x 3/8"H x 32<sup>1</sup>/16"D
- A13** Back Wall  
- 24<sup>3</sup>/32"W x 3/8"H x 27"D
- A55** (2) Wall Filler  
- 1/8"W x 3/8"H x 10<sup>5</sup>/8"D

### Main Roof

- A28** Roof A  
- 18 1/8"W x 3/8"H x 29"D
- A29** Roof B  
- 18 1/8"W x 3/8"H x 29"D
- A24** (4) Wall Q  
- 13/4"W x 3/8"H x 17<sup>11</sup>/64"D
- A62** (2) Support Q  
- 27/8"W x 3/8"H x 4<sup>27</sup>/64"D
- A56** (2) Floor Filler  
- 3/32"W x 3/8"H x 16<sup>15</sup>/64"D
- A113** Chimney  
- 5<sup>15</sup>/32"W x 2 1/4"H x 7"D
- A30** Roof C  
- 11<sup>3</sup>/64"W x 3/8"H x 12<sup>47</sup>/64"D
- A31** Roof D  
- 2"W x 3/8"H x 10<sup>43</sup>/64"D

### Dormer Roofs

- A26** (2) Large Dormer Wall  
- 6<sup>3</sup>/16"W x 3/8"H x 8 1/4"D
- A32** Large Dormer Roof  
- 6<sup>3</sup>/8"W x 3/8"H x 15"D
- A27** (4) Small Dormer Wall  
- 4 1/2"W x 3/8"H x 5<sup>7</sup>/8"D
- A33** (2) Small Dormer Roof  
- 3<sup>3</sup>/4"W x 3/8"H x 5<sup>9</sup>/32"D

### Stairs

- A90** (32) Tread  
- 7/8"W x 1/16"W x 3 1/4"D
- A89** (32) Spindles  
- 3/16"W x 2<sup>5</sup>/8"D
- A86** (2) Handrail  
- 1/4"W x 1/4"H x 17<sup>23</sup>/64"D
- A104** Hall Handrail  
- 3 1/2"W x 7/16"W x 12<sup>31</sup>/32"D
- A87** (2) Tall Newel Post  
- 7/16"W x 7/16"H x 3<sup>7</sup>/8"D
- A88** (2) Short Newel Post  
- 7/16"W x 7/16"H x 3<sup>15</sup>/64"D
- A103** (2) 16-Steps Stair  
- 3 1/8"W x 2<sup>9</sup>/32"H x 17<sup>1</sup>/64"D

### Outdoor Stairs

- A114** (2) Entrance Stair  
- 4<sup>11</sup>/32"W x 3<sup>17</sup>/64"H x 7<sup>3</sup>/16"D

### Windows

- A99** (6) W1: Window1  
- 4<sup>1</sup>/64"W x 5/8"H x 7<sup>33</sup>/64"D
- A66** (6) W1 : Left Back Trim  
- 1/2"W x 1/8"H x 6<sup>49</sup>/64"D

- A67** (6) W1 : Right Back Trim  
- 1/2"W x 1/8"H x 6<sup>49</sup>/64"D
- A91** (6) W1 : Acrylic Pane  
- 2<sup>23</sup>/32"W x 3/64"H x 6<sup>15</sup>/64"D
- A84** (8) W1, W2: Bottom Back Apron  
- 3/4"W x 7/32"H x 3<sup>61</sup>/64"D
- A105** (2) W2: Window2  
- 4<sup>1</sup>/64"W x 5/8"H x 5<sup>63</sup>/64"D
- A74** (2) W2: Left Back Trim  
- 1/2"W x 1/8"H x 5<sup>17</sup>/64"D
- A75** (2) W2: Right Back Trim  
- 1/2"W x 1/8"H x 5<sup>17</sup>/64"D
- A93** (2) W2: Acrylic Pane  
- 2<sup>23</sup>/32"W x 3/64"H x 4<sup>23</sup>/32"D
- A106** W3: Window3  
- 5<sup>29</sup>/64"W x 1/2"H x 8<sup>31</sup>/32"D
- A76** (2) W3: Left Back Trim  
- 1/2"W x 1/8"H x 8<sup>31</sup>/32"D
- A77** (2) W3: Right Back Trim  
- 1/2"W x 1/8"H x 8<sup>31</sup>/32"D
- A94** (2) W3: Acrylic Pane  
- 2<sup>23</sup>/32"W x 3/64"H x 7<sup>15</sup>/16"D
- A107** (2) W4: Window4  
- 2<sup>5</sup>/8"W x 1<sup>9</sup>/32"H x 5<sup>5</sup>/64"D
- A108** W5: Window5  
- 3<sup>3</sup>/32"W x 1<sup>9</sup>/32"H x 3<sup>17</sup>/64"D
- A78** W5: Left Back Trim  
- 1/2"W x 1/8"H x 2<sup>49</sup>/64"D
- A79** W5: Right Back Trim  
- 1/2"W x 1/8"H x 2<sup>49</sup>/64"D
- A80** W5: Top Back Trim  
- 1/2"W x 1/8"H x 3<sup>17</sup>/64"D
- A85** W5: Bottom Back Apron  
- 1/2"W x 7/32"H x 3<sup>17</sup>/64"D
- A95** W5: Acrylic Pane  
- 2<sup>15</sup>/64"W x 3/64"H x 2<sup>15</sup>/64"D
- A97** W6: Traditional  
24-Light Window  
- 5<sup>19</sup>/64"W x 1<sup>7</sup>/32"H x 8"D
- A58** W6: Left Back Trim  
- 1/2"W x 1/8"H x 5<sup>1</sup>/4"D
- A59** W6: Right Back Trim  
- 1/2"W x 1/8"H x 5<sup>1</sup>/4"D
- A60** W6: Top Back Trim  
- 1/2"W x 1/8"H x 7<sup>31</sup>/64"D
- A61** W6: Bottom Back Apron  
- 3/4"W x 1/4"H x 7<sup>5</sup>/8"D
- A63** W6: Window Pane  
- 4<sup>3</sup>/4"W x 3/64"H x 6<sup>15</sup>/32"D
- A68** (10) Window Back Trim, Top  
- 1/2"W x 1/8"H x 3<sup>49</sup>/64"D
- A109** (12) Shutter for W1  
- 13/8"W x 3/16"H x 6<sup>17</sup>/64"D
- A110** (4) Shutter for W2  
- 13/8"W x 3/16"H x 4<sup>49</sup>/64"D
- A111** (4) Shutter for W3  
- 13/8"W x 3/16"H x 8<sup>15</sup>/32"D
- A65** (20) Block  
- 1/2"W x 1/8"H x 2"D

## Doors

- A100** Front Door  
- 3<sup>11</sup>/<sub>16</sub>"W x 1/2"H x 9<sup>3</sup>/<sub>32</sub>"D
- A117** Back Door  
- 3<sup>11</sup>/<sub>16</sub>"W x 1/2"H x 7<sup>19</sup>/<sub>64</sub>"D
- A71** (11) Door Back Trim, Top  
- 1/2"W x 1/8"H x 3<sup>11</sup>/<sub>16</sub>"D
- A101** (6) Transom Door  
- 3<sup>11</sup>/<sub>16</sub>"W x 1/2"H x 9<sup>3</sup>/<sub>32</sub>"D
- A69** (7) Transom Door: Left Back Trim  
- 1/2"W x 1/8"H x 9<sup>3</sup>/<sub>32</sub>"D
- A70** (7) Transom Door: Right Back Trim  
- 1/2"W x 1/8"H x 9<sup>3</sup>/<sub>32</sub>"D
- A92** Transom Door: Acrylic Pane  
- 1<sup>39</sup>/<sub>64</sub>"W x 3/64"H x 2<sup>21</sup>/<sub>32</sub>"D
- A102** (3) Regular Door  
- 3<sup>11</sup>/<sub>16</sub>"W x 1/2"H x 7<sup>19</sup>/<sub>64</sub>"D
- A72** (4) Regular Door: Left Back Trim  
- 1/2"W x 1/8"H x 7<sup>19</sup>/<sub>64</sub>"D
- A73** (4) Regular Door: Right Back Trim  
- 1/2"W x 1/8"H x 7<sup>19</sup>/<sub>64</sub>"D
- A112** (2) Transom Arch  
- 6<sup>11</sup>/<sub>16</sub>"W x 1/2"H x 10<sup>11</sup>/<sub>32</sub>"D
- A81** (2) Transom Arch: Left Back Trim  
- 1/2"W x 1/8"H x 10<sup>11</sup>/<sub>32</sub>"D

- A82** (2) Transom Arch: Right Back Trim  
- 1/2"W x 1/8"H x 10<sup>11</sup>/<sub>32</sub>"D
- A83** (2) Transom Arch: Top Back Trim  
- 1/2"W x 1/8"H x 6<sup>11</sup>/<sub>16</sub>"D
- A96** (2) Transom Arch: Acrylic Pane  
- 1<sup>59</sup>/<sub>64</sub>"W x 3/64"H x 5<sup>43</sup>/<sub>64</sub>"D

## Pergola

- A98** Pergola Frame  
- 6"W x 1"H x 15"D
- A34** (5) Column  
- 1/2"W x 1/2"H x 12"D
- A36** (2) Long Beam  
- 1/4"W x 1/2"H x 6 1/2"D
- A35** Short Beam  
- 1/4"W x 1/2"H x 4 1/2"D
- A115** Long Fence  
- 2<sup>11</sup>/<sub>64</sub>"W x 5/16"H x 6 1/2"D
- A116** Short Fence  
- 2<sup>11</sup>/<sub>64</sub>"W x 5/16"H x 4 1/2"D

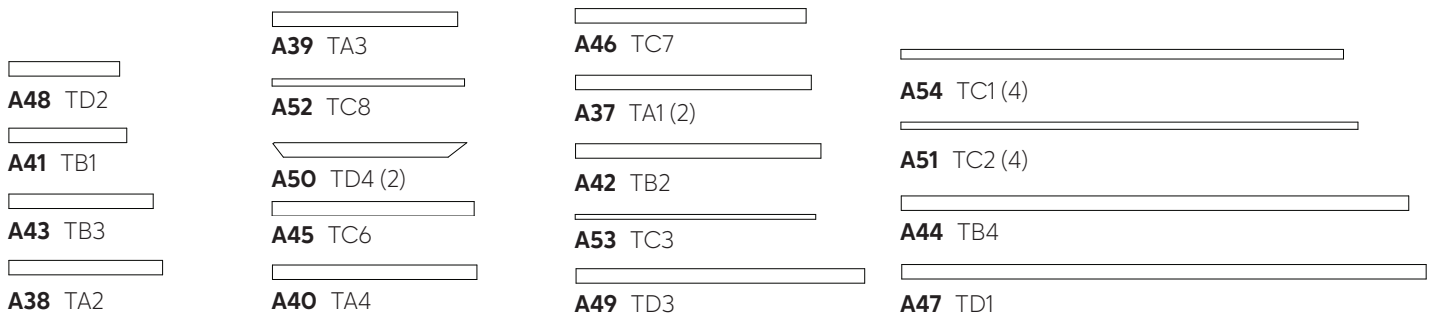
## Trim

- A37** (2) TA1  
- 3/4"W x 1/8"H x 12 1/4"D
- A38** TA2  
- 3/4"W x 1/8"H x 8"D
- A39** TA3  
- 3/4"W x 1/8"H x 9 5/8"D

- A40** TA4  
- 3/4"W x 1/8"H x 10 5/8"D
- A41** TB1  
- 3/4"W x 1/8"H x 6 1/8"D
- A42** TB2  
- 3/4"W x 1/8"H x 12 3/4"D
- A43** TB3  
- 3/4"W x 1/8"H x 7 1/2"D
- A44** TB4  
- 3/4"W x 1/8"H x 26<sup>29</sup>/<sub>64</sub>"D
- A54** (4) TC1  
- 1/2"W x 1/8"H x 23"D
- A45** TC6  
- 3/4"W x 1/8"H x 10 1/2"D
- A46** TC7  
- 3/4"W x 1/8"H x 12"D
- A51** (4) TC2  
- 3/8"W x 1/8"H x 23 3/4"D
- A53** TC3  
- 1/4"W x 1/8"H x 12 1/2"D
- A52** TC8  
- 3/8"W x 1/8"H x 10"D
- A47** TD1  
- 3/4"W x 1/8"H x 27 1/4"D
- A48** TD2  
- 3/4"W x 1/8"H x 5 3/4"D
- A49** TD3  
- 3/4"W x 1/8"H x 15"D
- A50** (2) TD4  
- 3/4"W x 1/8"H x 10"D

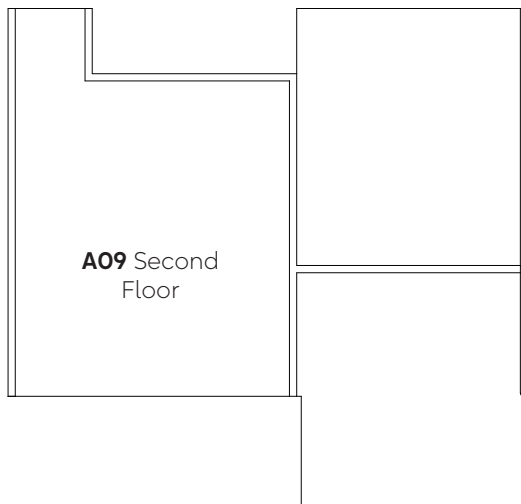
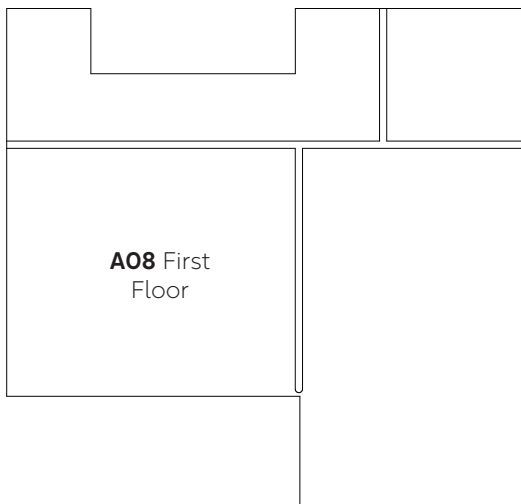
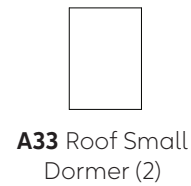
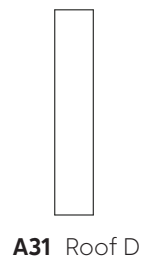
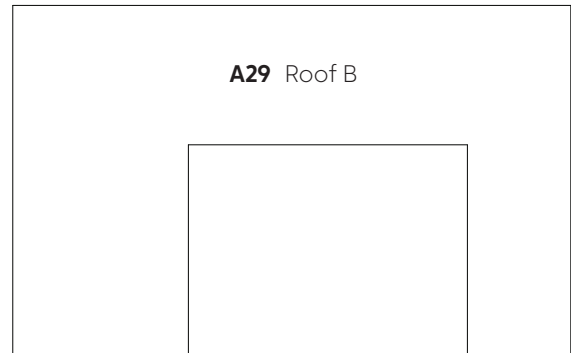
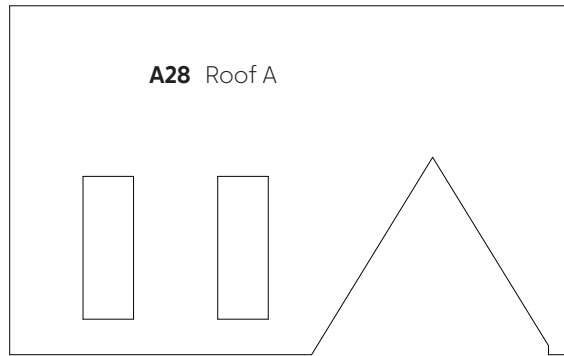
## Parts Diagram

Note: Not to scale



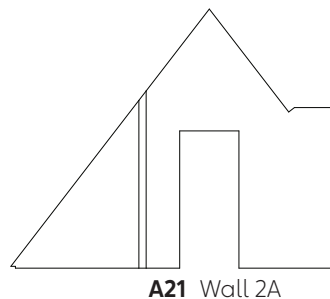
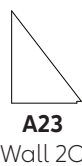
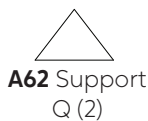
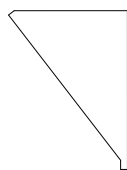
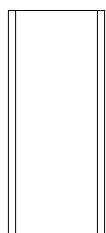
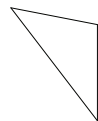
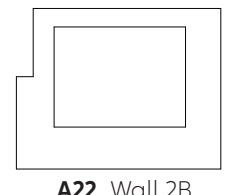
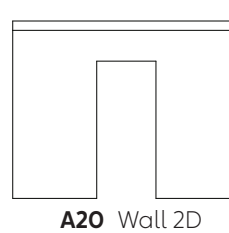
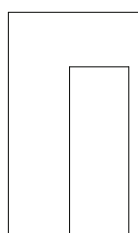
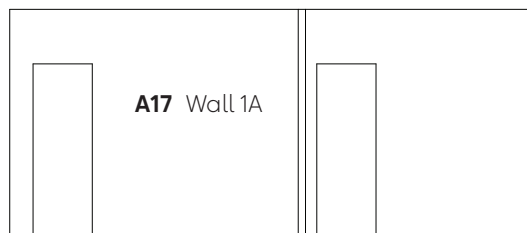
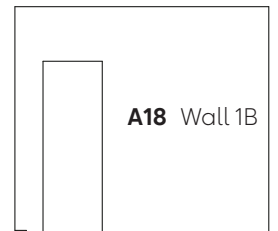
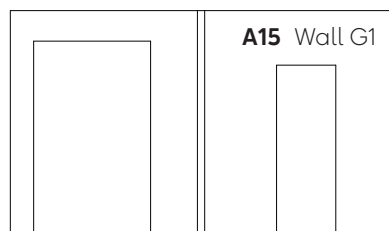
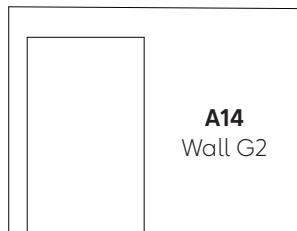
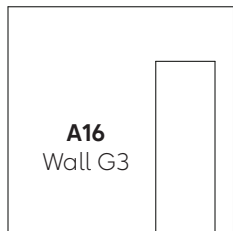
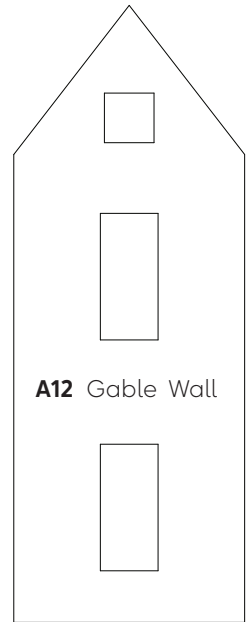
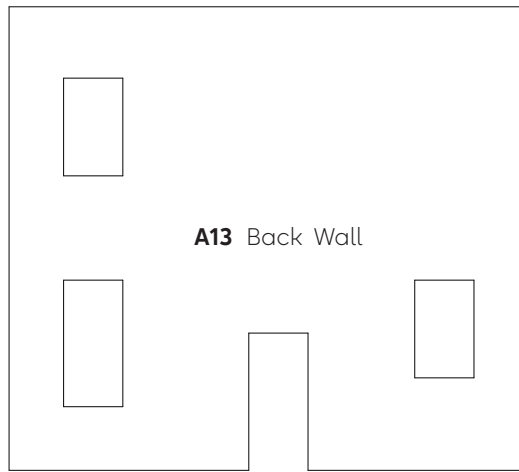
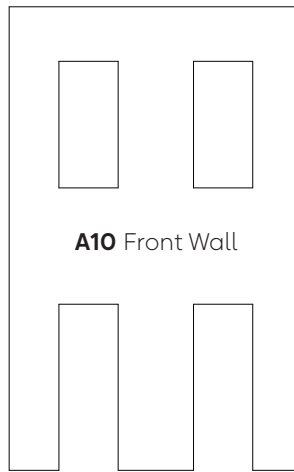
## Parts Diagram

*Note: Not to scale*



# Parts Diagram

Note: Not to scale



# Parts Diagram

Note: Not to scale



**A01** FFB (2)



**A02** FR



**A05** FLA



**A04** FLB



**A03** FLC

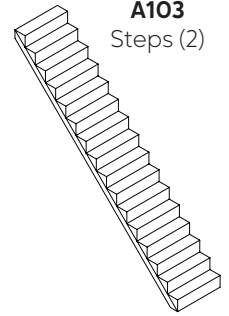
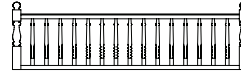


**A57** Brace (2)



**A104** Hall Handrail (2)

**A90** Stair  
Treads  
(32)



**A103**  
Steps (2)



**A86** Railing



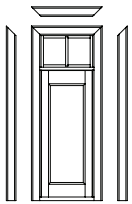
**A89**  
Spindles  
(32)



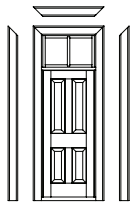
**A88**  
Lower  
Newel  
Post (2)



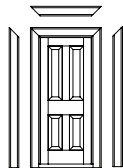
**A87**  
Upper  
Newel  
Post (2)



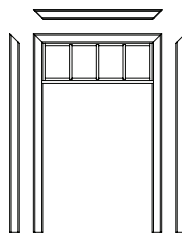
**A100**  
Front Door



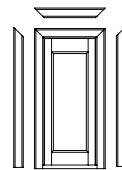
**A101**  
Transom  
Doors (6)



**A102**  
Regular  
Door (3)



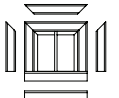
**A112** Transom  
Arch (2)



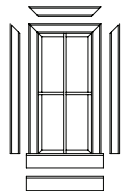
**A117**  
Back Door



**A107**  
W4 (2)



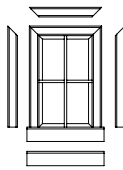
**A108**  
W5



**A99**  
W1 (6)



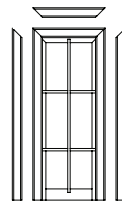
**A109**  
Shutter  
for W1 (12)



**A105**  
W2 (2)



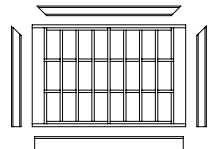
**A110**  
Shutter  
for W2 (4)



**A106** W3 (2)



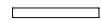
**A111**  
Shutter  
for W3 (4)



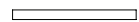
**A63** W6



**A34** Pergola Column (5)



**A36** Pergola Short Beam



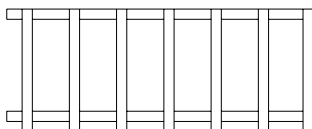
**A36** Pergola Long Beam (2)



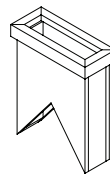
**A115** Pergola Fence Long



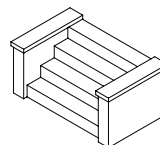
**A116** Pergola Fence Short



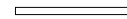
**A98** Pergola Frame



**A113** Chimney



**A114** Entrance Stair (2)



**A64** Arch Filler



**A55** Wall Filler (2)



**A56** Floor Filler (2)





We hope you enjoy your Spring Run Farmhouse kit!  
For finishing tips and more information, visit [miniatures.com](http://miniatures.com).

We would love to see how yours turns out; please send pictures to [support@miniatures.com](mailto:support@miniatures.com).

Questions? Contact us at [support@miniatures.com](mailto:support@miniatures.com) or call 1.800.926.6464 (Mon-Fri 10:00 AM-5:00 PM ET).